

29001

Vertical rack vise

HOEFMANN

Type

Basic body lacquered RAL 7035 light grey, union nut and clamping lever burnished. Collets are not supplied.

Use

For quick fixing of workpieces with push-type collets. Suitable for drilling and milling machines, tapping tools and with measuring devices.

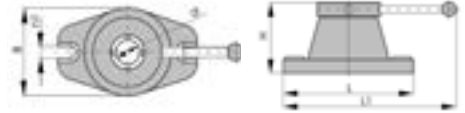
Note:

Collets with round bore, see cat.-no. 21568 and 21570.
Collets with 4-point and 6-point profiles available on request.

29001



Clamping range d mm	B mm	H mm	L x L1 mm	n1 mm	for collet type	29001	...
3 - 42	135	100	210 x 347	14	173 E		103



29003 - 29004

Horizontal-Vertical Circular Indexing Unit Type HRTE 165/HRTU 165

Type

With three-jaw lathe chuck. Circular indexing table made of high-quality Meehanite cast iron, reliable and precise thanks to precision tapered roller bearing. Large spindle opening, for clamping longer workpieces. Direct indexing by means of locking disc for higher speeds of mass production components. 24 positions (15° graduation), 7 locking discs for 2 / 3 / 4 / 6 / 8 / 12 / 24-x graduations. Incl. Mounting disc with 3 grooves.

29003 101

HRTE 165

Type

Degree indexing by means of 360° scale.

29004 101

HRTU 165

Type

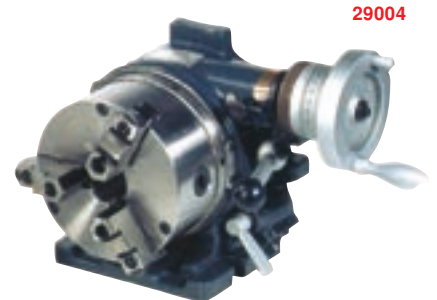
Degree indexing by means 360° scale with crank and vernier.

29003



Cat.-no.	29003 101	29004 101
Type	HRTE 165	HRTU 165
Three-jaw chuck Ø:	165 mm	165 mm
Build height:	200 mm	221 mm
Length x width:	218 x 260 mm	235 x 250 mm
Height of centres:	130 mm	130 mm
Clamping disc Ø:	203 mm	203 mm
Clamp Ø chucks max.:	210 mm	210 mm
Aperture:	36 mm	36 mm
Weight:	32.5 kg	48.0 kg

Type	29003	...	29004	...
HRTE 165		101		
HRTU 165				101



29004

29005

Height adjustable Tailstocks Type HRST

29005 101

HRST 1

Use

For round divider table HRT 150 see cat.-no. 29210 102.

29005 102

HRST 2

Use

For round divider table HRT 200 see cat.-no. 29210 103 and round indexing device HRTE 165 see cat.-no. 29003 101 and round indexing device HRTU 165 see cat.-no. 29004 101.

29005

Type	Height of points mm	29005	...
HRST 1	97 - 101		101
HRST 2	103 - 166		102



www.atorn.de

Performance requires quality.

For example, with the boring bar from ATORN.

- For double-sided threading inserts
- Support plate with anti-vibration geometry
- Patent applied for



29007 Direct Dividing Heads

HOEPMANN

Type
For direct indexing and indexing in degrees. Angled base plate for horizontal and vertical work. With 24-pitch indexing disc for pitches 2 / 3 / 4 / 6 / 8 / 12 and 24. With rapid clutch. The desired pitch is defined by limit stop in conjunction with the degree scale. Then the divider process takes place in response to reciprocal movement of the selector lever. Pitch precision +/- 60 sec. (cumulative indexing error). Indexing spindle suited for mounting of lathe chucks, rotary tables or collet chucks. Standard version without the mentioned mounting tools.

Note:
Round tables, gripper collet, lathe chuck and drill bushings can be supplied on request.

29007



Size	Height of points mm	for lathe chuck/bore Ø mm	for round table Ø mm	for gripper collet mm	baseplate mm	29007	...
3	125	125	160	4 - 24	250 x 240/133		101
4	160	200	250	8 - 40	300 x 310/145		102

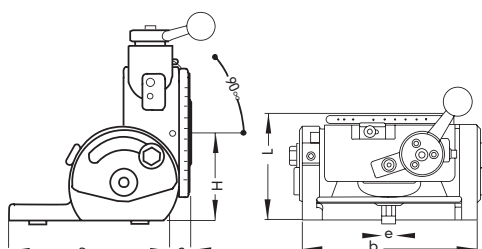
29012 Dividing heads Type EST

walter
PRAZISION

Type
- Pivots through 90°
- With 24-stop (detent position) standard indexing disc for pitches 2 / 3 / 4 / 6 / 8 / 12 und 24 (special indexing discs up to 48 detent positions can be supplied)
- Indexing disc with 360° scale and adjustable nonius 1/20° = 3' readable
- Indexing and divider spindle clamping with selector lever
- Normal accessories: Direct divider disc 24 detent positions, test report
- **Without** three-jaw chuck (chuck see cat.-no. 29019).

Use
For direct indexing and indexing in degrees. For working in horizontal and vertical positions.

29012



Size	H mm	L mm	a mm	b mm	c mm	e mm	max. Spindle opening Ø mm	Weight kg	29012	...
EST 2	80	115	155	182	27	14	26	14		101

29019 Three-Jaw Chucks

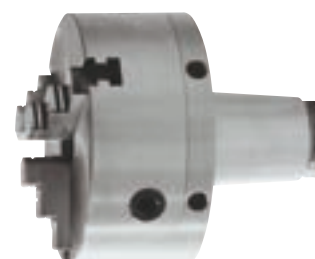
walter
PRAZISION

Type
With 3 reversing jaws, flange and taper insert.
Use
An accessory for indexing units cat.-no. 29012.

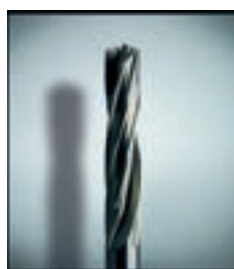
Note:
Gripper chucks, collets, special divider discs, drivers, headstocks, flat discs and support frames available on request.

29019

for Size	Ø max. mm	29019	...
2	125		101
2	140		102
4	160		103



Clamping Technology



www.atorn.de

Performance requires quality.

For example, with the solid carbide high-performance ALUSPEED drill, from ATORN.

- 6x guiding section
- Solid carbide Ultra finest grit
- Al-CC-coating
- to 8xD
- Twisted cooling channel

ATORN®
Performance requires quality.

29041

Half-Universal divider devices Type HTH

HOEFMANN**Type**

For direct and indirect indexing, and indexing by degrees:

Direct dividing process using interchangeable indexing disc (2 to 36 detent positions).

Indirect dividing process using perforated discs and worm drive.

Swivellable spindle head from 0° to 90°.

Standard accessories:

1 direct divider disc with 24 detent positions,
1 perforated divider disc for pitches of up to 50.

Note:

The following accessories are available on request:

Fixed and adjustable headstocks, lathe centres and drivers (chucks, see cat.-no. 29051).

Indexing units for spiral milling available on request.

29041



Type	Height of points mm	29041	...
HTH-100	100		101
HTH-125	125		102
HTH-160	160		103

29051

Three-Jaw Chucks

HOEFMANN**Type**

With 3 ea. outside and inside diameter jaws and back plate.

Use

For dividing heads cat.-no. 29041.

29051



Type	Ø mm	29051	...
100	100		101
125	125		102
160	160		103

29210 - 29211

Horizontal-Vertical Circular Indexing Tables Type HRT

29210

Type

Circular indexing table made of high-quality Meehanite cast iron, reliable and precise thanks to precision bearing. Large spindle opening, for clamping longer workpieces. Quick indexing by means of locking disc for higher speeds of mass production components. Worm hardened and ground, gear ratio 90:1. Worktop is scaled to 360°, 1 complete turn of handwheel = 4° of rotation. Graduation is possible by means of scaled hand wheel with vernier.

29211 101

Chuck flange**Use**

Suitable for round divider table HRT 150
see cat.-no. 29210 102.

29211 102

Chuck flange**Use**

Suitable for round divider table HRT 200
see cat.-no. 29210 103.

29211 103

Three-Jaw Chucks**Type**

Diameter 130 mm.

Use

Suitable for round divider table HRT 150
see cat.-no. 29210 102.

29211 104

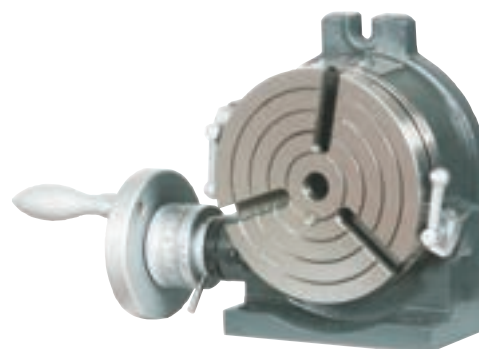
Three-Jaw Chucks**Type**

Diameter 165 mm.

Use

Suitable for round divider table HRT 200
see cat.-no. 29210 103.

29210 101



Cat.-no.	29210 101	29210 102	29210 103
Type	HRT 100	HRT 150	HRT 200
Lathe Centres:	MK 2	MK 2	MK 3
Plate size:	Ø 110 mm	Ø 150 mm	Ø 200 mm
Build height:	72 mm	79 mm	104 mm
Length x width:	138 x 118 mm	204 x 156 mm	265 x 199 mm
Height of centres:	80 mm	102 mm	133 mm
Groove width/number:	11 mm/3	11 mm/4	16 mm/4
Weight:	9 kg	12 kg	30 kg

Type	29210	...	29211	...
HRT 100				101
HRT 150				102
HRT 200				103
Chuck flange for HRT 150				101
Chuck flange for HRT 200				102
Three-jaw chuck for HRT 150				103
Three-jaw chuck for HRT 200				104



29212

Indirect Indexing Units Type HIT

29212 101

HIT 150

Type

Incl. 3 index plates, sector arm, angle cutter with spring steel sheet.

Use

For round divider table HRT 150

see cat.-no. 29210 102

and round indexing device HRTU 165

see cat.-no. 29004 101.

29212 102

HIT 200

Type

Incl. 2 index plates, sector arm, angle cutter with spring steel sheet.

Use

For round divider table HRT 200

see cat.-no. 29210 103.

29212 101



Typ	29212	...
HIT 150		101
HIT 200		102

29220

Small round Table, Type RH

HOFMANN

Type

Sturdy and precise construction, flat design and low weight. With measuring drum for angle settings in degrees, minutes and seconds. Adjustable worm drive eccentrically mounted in the housing.

Use

Specially designed for engraving and light milling machines.

29220



Table-Ø mm	Head room mm	Gear ratio	Reading and setting resolution	Indexing accuracy	Vernier	Weight approx. kg	29220	...
200	75	1:90	6 sec.	+/- 30 sec.	x	19		103

29231

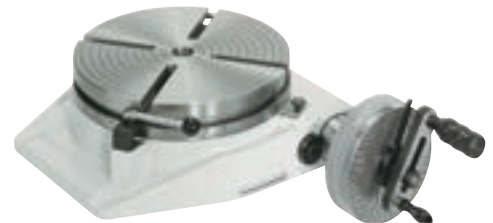
Rotary Tables RI

HOFMANN

Type

With indirect indexing unit and coolant drain channel. Divider precision +/- 15 sec. Manually operated round tables for horizontal use on machine tools.

29231



Type	Table Ø mm	29231	...
RI-250	250		101
RI-320	320		102
RI-400	400		103

29236

Tilting Precision Rotary Tables HPRS

HOFMANN

Type

With indirect indexing. Indexing accuracy +/- 10 sec. in the rotating axis and +/- 60 sec. in the tilting axis.

With measuring drum/vernier for use on machine tools as well as for measuring and testing instruments. Tilting range 0° to 90°.

29236



Type	Table Ø mm	29236	...
HPRS-320	320		102

HOFMANN

NC-dividing head as modular system for usage as 4th axis or for retrofitting with a control and hydraulic unit.

Construction types

- Height of centres 75, 100, 125, 160, 220, 300 and 450 mm
- Face plate diameters 80, 100, 150, 200, 250, 320, 400, 500, 630, 800 und 1000 mm.
- For use on machining centres, milling machines, measuring instruments, grinding machines, engraving machines and laser machines and under special construction for use on erosion machines.

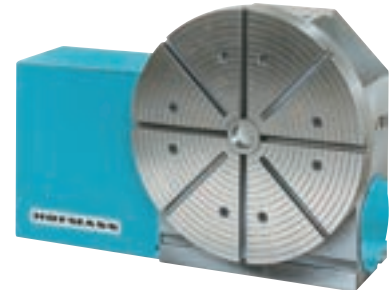
Types

- Type RW/NC** Basic version as a single-axis NC divider unit
- Type RW/NC** 2 to 4-spindle, single-axis NC divider unit
- Type RS/NC** Pivotal NC divider unit with 2 NC axis also with 2-4 axes of rotation
- Type RSM** Pivotal NC divider unit with manual pivot axis

Technical characteristics

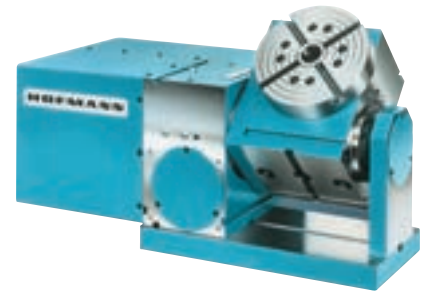
- Use with horizontal or vertical rotation axis
- Hydraulic spindle clamping system for high-speed machining forces
- Use of high precision bearings
- Worm gear adjustable
- Splash-proof
- Spindle type with
ST 30, 40, 50,
HST 32, 40, 50, 63, 80 and 100,
MT 2, 3, 4, 5, 6
- Direct measuring systems possible
- Servo motor in compliance with customer request as 4. axis
- Positioning control and hydraulic unit as retrofit available on request

Please contact us!



Accessories

- Face plate
- Three and four-jaw chucks, also available power-operated
- Collet chuck
- Tailstocks, manually or hydraulic operated



29517

Precision Micrometer Tables

Type

- With swallowtail guide
- Made of special casting, clamping surface and guides ground
- Runout precision 0.03 mm
- Swallowtail guides adjustable using guide strips
- Whirled trapezoidal threaded spindles with thrust bearings
- Scale drums with datum adjustment, directly readable
- Scale pitch, 0.05 mm

Note:

Size 2-4 (cat.-no. 29517 102-104) with water channel, and clamping levers on both axes, enabling it to be clamped in every position.

29517 101



29517 104



Size	Table area L x W mm	Base area L x W mm	Overall height mm	Travel long. mm	Travel trans. mm	T-slot width mm	Distance between T-slots mm	Load ability kg	Weight approx. kg	29517	...
1	300 x 160	160 x 160	78	180	100	10	50	75	16	101	
2	450 x 240	259 x 200	126	275	155	14	60	280	52	102	
3	580 x 240	259 x 200	126	375	155	14	60	280	60	103	
4	650 x 270	365 x 200	140	450	250	14	70	300	90	104	

walter
PRAZISION **driven by perfection**

**TANi-CNC NEG with positioning control to extend the range of your machine.
Can be controlled using the M function or limit switches.**

- Driven using a high-precision worm drive
- Resolution 0.001°
- Speeds of up to 66 rpm
- Divider precision +/- 15 seconds of arc
- Pneumatic or hydraulic clamping possible with activation

**Together with a full-spectrum WALTER 1-axis CNC controller
our dividing heads are the ideal enhancement for**

- conventional milling machines
- conventional drilling machines
- tool milling machines
- grinding machines
- erosion machines
- machining centres

Additional axes or multi-spindle units enable multi-sided machining up to genuine 5-sided machining without the need for a change of fixture setting.



**TANIH2-S- 4th and 5th axis
on a machine tool**



TANi multi-spindle for rational high-volume production

- Large selection of sizes
- Stable clamping with maximum holding values
- Modular expansion possible
- Many accessory variants available

Please contact us - we will be delighted to provide you with a personalised quotation!



**Large range of
accessories-
available!**

walter
PRAZISION **driven by perfection**

TANi
evolution

NC Dividing heads and NC round table from Walter have a worldwide reputation for ultimate quality, cost-effectiveness and process reliability - for more than 75 years. Continuous further development of our equipment guarantees ultimate precision and leading-edge technology. This results in the latest generation of the proven TANi range.

The new generation

Ideal conditions for every production process in which precision is a matter of priority. The compact modular principle enables several combinations of spindles and axes. High-quality materials and an innovative design guarantee seamless operation in every position.

- Tip heights of 80 to 320 mm
- Highest divider precision (up to +/- 1.5 seconds of arc is possible)
- High roundness and top runout precision levels
- High loadings
- Stable clamping action with highest holding values
- Modular expansion possible
- Many accessory variants are available

**Higher-quality, more precise, more powerful:
The new reference is colour-coded in red.**

